

TREES IN WATERCOLOUR

2 DAY WORKSHOP WITH MAXINE WADE

At Victorian Artists' Society Studio

430 Albert Street, East Melbourne Phone: 9662 1484

On MONDAY 14TH APRIL & TUESDAY 15TH APRIL 2025

10am - 4pm each day

Have you been having trouble painting realistic looking trees with your watercolour? If so, I can help you improve your results and a better understanding of trees in this **2 DAY WORKSHOP**. We will have the opportunity to explore **IN DEPTH** the various species of trees, their habit, foliage and bark. Also, the **MIXING OF GREENS** – often a bone of contention fraught with failure by many student artists. So, I will guide you through the use of various brushes and their marks, colour mixing, negative painting, form and texture through painting a variety of small studies – plus one major landscape to employ all that you have learned. Watercolour techniques employed!

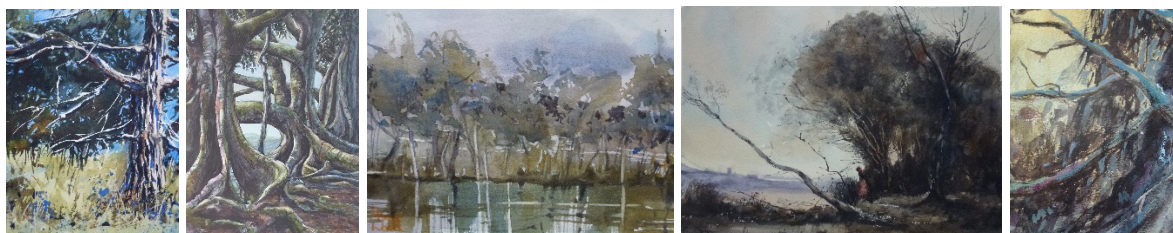
MATERIALS LIST. Please bring the following:

PAPER: **A MUST!!** 4 x A3 or quarter sheet size watercolour paper 100% rag/cotton 300gsm medium rough (Arches, Baotong, or Saunders brands)

PAINTS: bring your normal palette/supply that you have – but it **MUST** include the following colours: Ultramarine Blue, Cobalt Blue, Manganese Blue, Quinacridone Gold, Raw Sienna, Burnt Sienna, Perylene Green **OR** Undersea Green **OR** Jadeite (Daniel Smith brand), Brown madder **OR** Quinacridone Orange, Sepia, Perylene Violet, Neutral Tint (or another **BLACK**) & **white gouache**

BRUSHES: bring your own brush collection, but you will also require a **FAN BRUSH** (at least 2cm width), a **RIGGER BRUSH** size 6 or 8, a couple of **ROUNDS** small and larger, a small flat chisel brush about 1 – 2 cm width.

OTHER: masking tape, board to suit A3 size, 2B pencil, tissues, water container, palette



Some examples of my watercolour paintings of trees in the landscape (2nd from the right is my copy of Corot's "The Bent Tree")

THIS WORKSHOP IS NOT SUITABLE FOR BEGINNERS....SOME EXPERIENCE WITH WATERCOLOUR IS REQUIRED